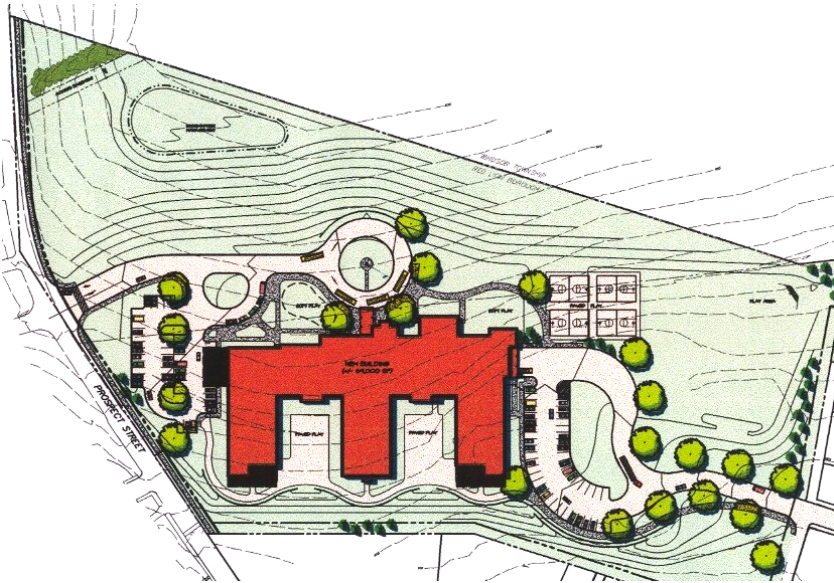


Mazie Gable Elementary School

Red Lion Area School District

Red Lion Borough and Windsor Township, York County, Pennsylvania



Master Plan



Construction Adjacent to Existing School



New Retaining Wall Construction

Project Description:

Developed on the site of the existing Mazie Gable Elementary School, the School District constructed a new 69,000 square foot elementary school (footprint) to replace the existing outdated facility. The existing school building, which remained in place on this compact site during construction, was demolished to permit completion of the site improvements after the new building was ready for occupancy. Site improvements included a new access drive to Prospect Street, facilitating a new separate bus drop area, parent drop area, and service area that vastly improved internal site circulation. Built into a steeply sloping confined site, several hundred feet of serpentine retaining wall was required to terrace the building pad and parking areas into the slope. Other improvements included public roadway improvements, hardscape play areas, playgrounds, open areas for physical education, walkways, and landscaping.

Services Provided:

ELA designed all site improvements and prepared construction documents for all proposed parking areas, access drives, athletic fields, play areas, roadway improvements, utility improvements, and storm water management improvements. ELA represented the project through the land development approval process, including preparation of storm water management studies, erosion and sedimentation control plans/NPDES permitting, and preparation of land development/storm water management plans. Services also included Highway Occupancy Permitting (PennDOT), lot add-on planning, and assisted District counsel in negotiating adjoining property acquisition.

ELA coordinated with the architect, school district project committee, and school staff throughout the design and construction process to develop comprehensive site facilities, which will meet the needs of the District. Services also included bidding and construction administrative services.



Engineers & Landscape Architects

743 S. Broad Street
Lititz, PA 17543
(717) 626-7271

2013 Sandy Drive, Suite 103
State College, PA 16803
(814) 861-6328